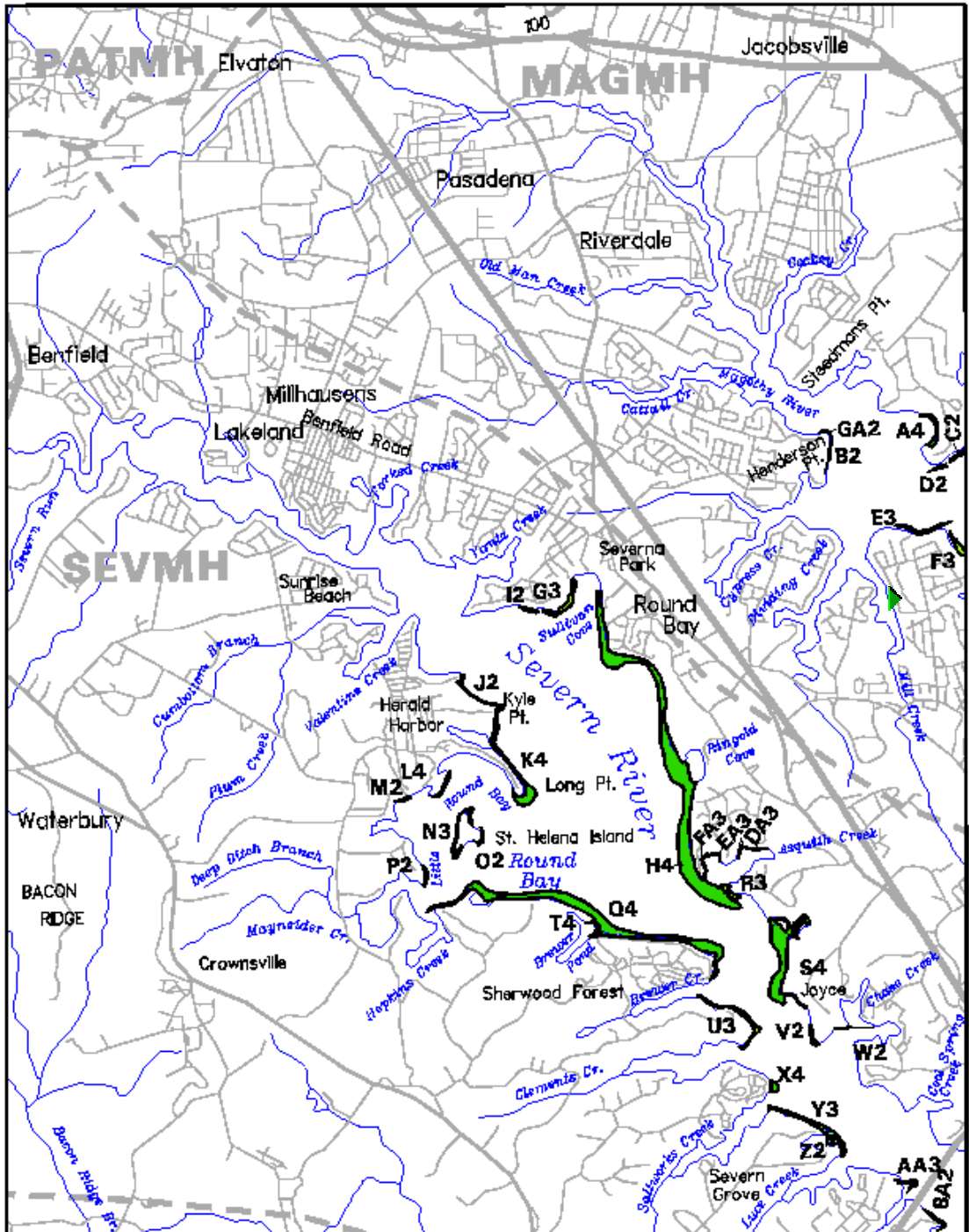


Severn River (Round Bay, MD 023) Submerged Aquatic Vegetation 2002



Hectares of SAV: 119.72

Date Flow: 08/02, 10/14

Date Modified: 07/02/2003

1000 0 1000 2000 meters



2002 SAV Density Class

0-10% 10-40% 40-70% 70-100%

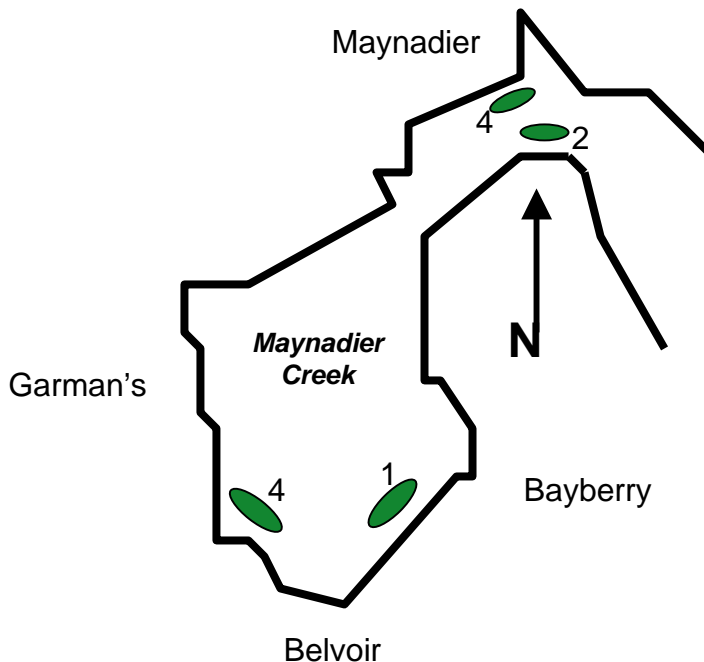


Sources: VIMS, USGS

VIMS SAV Mapping Last modified 09/08/03.

Belvoir Farms

Maynadier Creek SAV Mitigation Plan



Planting Notes

1. Planting stock will be Redhead and Widgeon Grass from the Sherwood Forest SAV tidal nursery located 1.5 miles to the east of Maynadier Creek.
2. SAV reforestation operations will be conducted by the Sherwood Forest Naturalist Program over a 5 year period. The mission will be to reforest the entire creek with climax stage SAV native species, to exceed more than one acre in coverage.
3. Using 6 years of experience in successful SAV transplant operations within the Severn River coupled with direct knowledge of Maynadier Creek's SAV beds and actual water quality conditions, plant 500 large rooted plugs annually at the above indicated sites. Sites 1 and 2 to be planted in 2004, 3 and 4 in 2005. Plantings for 2006 – 2008 to be in accordance with initial planting success assessment. All plantings will be in accordance with previously established protocols derived from Dr. Peter Bergstrom, USFWS; Dr. Court Stevenson, University of Maryland; and Dr. J.J. Orth, VIMS. NOTE: (1) Sites 1 and 4 have had sparse coverage of Pond Weed and are deemed suitable for reforestation. Sites 2 and 3 provide the maximum opportunity for natural SAV seed dispersal and are assessed as a priority for large-scale / long-term success. (2) From experience it has been learned that a single massive planting is ineffective and readily subject to failure. A commitment to a multi-year approach with annual planting adjustments as needed is most effective and recommended.